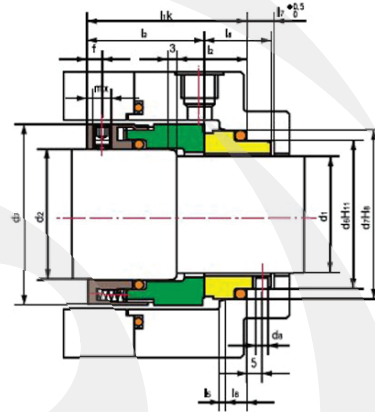
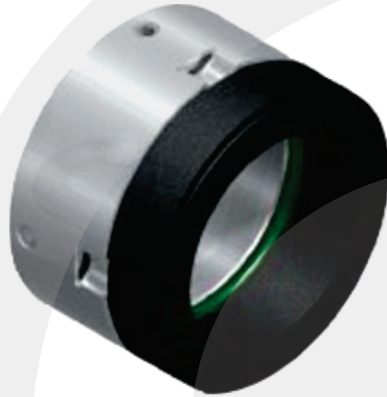


E-B01



Certificada ISO 9001/2008



Limites operacionais:

Pressão < 2.5MPa
 Velocidade < 25m/s
 Temperatura: -20°C~+260°C

Operating limits:

Pressure < 2.5MPa
 Speed < 25m/s
 Temperature: -20°C~+260°C

- Anel Giratório (Carvão/SiC)
- Anel Estacionário (SiC)
- Selo Secundário (VITON/Anel Encapsulado/PTFE/EPDM/Kalrez)
- Outras Peças (SUS304/SUS316)

- Rotary Ring (Carbon/SiC)
- Stationary Ring (SiC)
- SecoNdary Seal (VITON/Encapsulated Ring/PTFE/EPDM/Kalrez)
- Other Parts (SUS304/SUS316)

d1 (mm)	d ₂	d ₃	d ₆	d ₇	d ₈	l _{1k}	l _{1'}	l ₂	l ₃	l _{3'}	l ₄	l ₅	l ₆	l ₇	l ₈	l ₉	I ₃₁	f	mx
28	33	48	37	43	3	50	89	20	38.5	66	33	2	5	9	19.5	11.5	16.5	5	M6
30	35	50	39	45	3	50	89	20	38.5	66	33	2	5	9	19.5	11.5	16.5	5	M6
32	38	55	42	48	3	50	89	20	38.5	66	33	2	5	9	19.5	11.5	16.5	5	M6
33	38	55	42	48	3	50	89	20	38.5	66	33	2	5	9	19.5	11.5	16.5	5	M6
35	40	57	44	50	3	50	89	20	38.5	66	33	2	5	9	19.5	11.5	16.5	5	M6
38	43	60	49	56	4	52.5	95	23	38.5	67	33.5	2	6	9	22	14	16.5	5	M6
40	45	62	51	58	4	52.5	95	23	38.5	67	33.5	2	6	9	22	14	16.5	5	M6
43	48	65	54	61	4	52.5	95	23	38.5	67	33.5	2	6	9	22	14	16.5	5	M6
45	50	67	56	63	4	52.5	95	23	38.5	67	33.5	2	6	9	22	14	16.5	5	M6
48	53	70	59	66	4	52.5	95	23	38.5	67	33.5	2	6	9	22	14	16.5	5	M6
50	55	72	62	70	4	57.5	99	25	42.5	69	34.5	2.5	6	9	23	15	16.5	5	M6
53	58	79	65	73	4	57.5	104	25	42.5	74	37	2.5	6	9	23	15	17	5	M6
55	60	81	67	75	4	57.5	106	25	42.5	76	38	2.5	6	9	23	15	17	5	M6
58	63	84	70	78	4	62.5	112	25	47.5	82	41	2.5	6	9	23	15	19	7	M8
60	65	86	72	80	4	62.5	112	25	47.5	82	41	2.5	6	9	23	15	19	7	M8
63	68	89	75	83	4	62.5	112	25	47.5	82	41	2.5	6	9	23	15	19	7	M8
65	70	91	77	85	4	62.5	112	25	47.5	82	41	2.5	6	9	23	15	19	7	M8
70	75	99	83	92	4	70	118	28	52	82	41	2.5	7	9	26	18	19	7	M8
75	80	104	88	97	4	70	120	28	52	84	42	2.5	7	9	26	18	19	7	M8
80	85	109	95	105	4	70	120	28	51.8	83.6	41.8	3	7	9	26.2	18.2	19	7	M8
85	90	114	100	110	4	75	120	28	56.8	83.6	41.8	3	7	9	26.2	18.2	19	7	M8
90	95	119	105	115	4	75	120	28	56.8	83.6	41.8	3	7	9	26.2	18.2	19	7	M8
95	100	124	110	120	4	75	120	28	57.8	85.6	42.8	3	7	9	25.2	17.2	19	7	M8
100	105	129	115	125	4	75	120	28	57.8	85.6	42.8	2	7	9	25.2	17.2	19	7	M8
105	115	148	122.2	134.3	5	73	133	32	53	93	46.5	2	10	\	30	20	22.5	7	M8
110	120	153	128.2	140.3	5	73	133	32	53	93	46.5	2	10	\	30	20	22.5	7	M8
115	125	158	136.2	148.3	5	73	133	32	53	93	46.5	2	10	\	30	20	22.5	7	M8
120	130	163	138.2	150.3	5	73	133	32	53	93	46.5	2	10	\	30	20	22.5	7	M8
125	135	168	142.2	154.3	5	73	133	32	53	93	46.5	2	10	\	30	20	22.5	7	M8