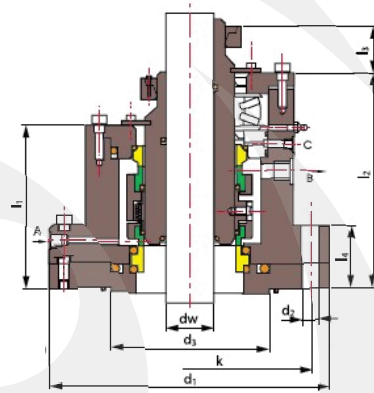
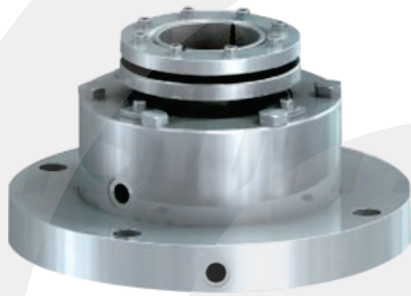


E-AB01

Certificada ISO 9001/2008



Limites operacionais:

Pressão < 2.5MPa/< 4MPa
 Velocidade < 5m/s
 Temperatura: -30°C~+200°C /-80°C~+350°C

Operating limits:

Pressure <2.5MPa/< 4MPa
 Speed < 5m/s
 Temperature: -30°C~+200°C /-80°C~+350°C

- Anel Giratório (SiC/Carvão/TC)
- Anel Estacionário (SiC/TC/Cerâmica)
- Selo Secundário (VITON/Anel Encapsulado/PTFE)
- Outras Peças (SUS304/SUS316/Titânio/Hastelloy-C)

- Rotary Ring (SiC/Carbon/TC)
- Stationary Ring (SiC/TC/Ceramic)
- Secondary Seal (VITON/ Encapsulated Ring/PTFE)
- Other Parts(SUS304/SUS316/Titanium/Hastelloy-C)

dw (mm)	d ₁	Nxd ₂	d ₃	k	l ₁	l ₂	l ₃	l ₄
40	200	6x18	80	170	115	170	35	45
50	230	8x18	100	200	120	185	35	55
60	255	8x18	120	225	140	210	35	60
80	295	8x23	145	260	145	230	44	60
100	315	8x23	170	280	160	245	44	65
120	345	8x23	190	310	160	250	50	65
140	380	12x23	215	345	165	265	50	65
160	440	12x27	240	395	185	300	50	75
180	475	12x27	260	430	185	310	55	75
200	465	12x27	290	420	190	290	55	75