

SELOS COMPONENTES

COMPONENT SEAL



EG-1 01



EG-12 01



EG-13 03



EG1-A 04



E-31 05



E-32 06



EG-9 07



EG-3 08



EG-CR 09



E-13 10



E-12 12



E-74D 13



E-70 14



E-74 14



E-60 15



E-75 15



E-38 16



E-39 16



E-38UR 17



E-38B/39B 17



EG-502 18



E-57 19



E-40 20



E-109 21



E-109B 23



E-81 25



E-81B 27



EG-WE 29



EG-1500 30



EG-KB 31



EG-HJ 32



EG-491 33



EG-PS 34



E-ST 34



E-HRN 35



E-X 36



E-XA/XB/XC 37



E-XD 38



E-XE 39



E-AP 40



E-W2 41



SELOS GÁS

DRY GAS SEAL



E-J01 42



E-J02 43



E-J03 44



E-B01 45



E-B02 46



E-FS01 47

SELOS DE FOLE METÁLICO

METAL BELLOWS SEAL



E-BJ01 48



E-BJ04 49



E-BJ05 50



E-BJ06 51



E-BJ07 52



E-BJ08 53



E-BJ09 54



E-BJ13 55



E-S02 56



E-S07 57



E-S08 58



E-S09 59



E-MB01 60



E-MB04 61



E-MB06 62



E-MB07 63



E-C01 64



E-C02 65



E-C03 66



E-A01 67



E-A04 68



E-Z02 69



SELOS PARA MISTURADORES E AGITADORES

MIXER AND AGITATOR SEAL



E-MA-J04/J05 70



E-AB01 71



E-AB02 72



E-AB03 73



E-AB04 74



EG MA-A03 75

SELOS CARTUCHO SIMPLES/DUPLA

SEALS CARTRIDGE SINGLE/DOUBLE



E-CJ01 77



E-CJ02 79



E-CJ03 81



E-CJ04 82



E-CJ05 82



E-CJ08 83



E-CJ09 84



E-CB02 85



E-CB03 86



E-CB04 (K1) 87



E-CB05 88



E-FS02 88



E-FS03 89



E-FS05 90



E-CC01 91



E-CC03 92



E-CC04 93



E-CA01 94

SELOS CARTUCHO SIMPLES/DUPLA

SEALS CARTRIDGE SINGLE/DOUBLE



E-CA03 96



E-CA04 98



E-CA05 99



E-CA06 100



E-DCJ01 101



E-DCJ05 103



E-DCFS02 103



E-DCC03 104



E-DCA02 105



E-DCA03 107



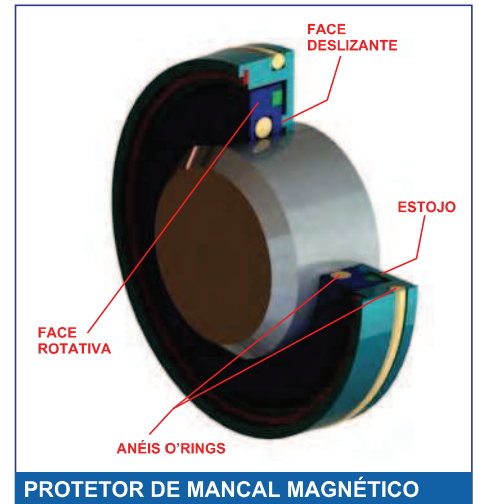
E-DCA04 109



E-DCB01(K2) 111



E-DB02 112



PROTECTOR DE MANCAL MAGNÉTICO

SELOS ESPECIAIS

SPECIAL SEAL



E-X03/X03B/03C 113



E-X13/X13B/X13C 114



E-PC01 115



E-FA01 116

SISTEMA DE SUPORTE PARA SELOS

SEAL SUPPORT SYSTEM



E-QS 117



E-PB 117



E-TS 117



E-CP 118



E-MRP 118



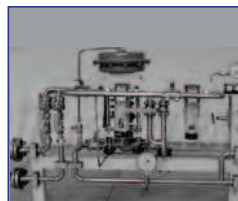
E-CS 119



E-CT 119



E-MS 119



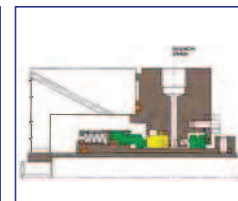
SISTEMAS 120



ACOPLAMENTOS 120



INSTRUMENTOS 120



PLANOS DE SELAGEM 121
122

PEÇAS PARA VEDAÇÃO

SEALING PARTS



MOLA ONDULADA 123
126



MOLA ONDULADA 123
126



GRAFITE 127



SIL/TUNG 128



PEÇAS EM BORRACHA 129



O-RINGS ENCAPSULADOS 130

SELOS PARA LATICÍNIOS

SEALING PARTS



LKH-110



GEA DN-25/50



CR-114/CR-216/CR-218-E



CR-114/CR-216/CR-218-D/F



APV W+25/W+35



SOLIDIC LKH-25

APV UNI 25,4