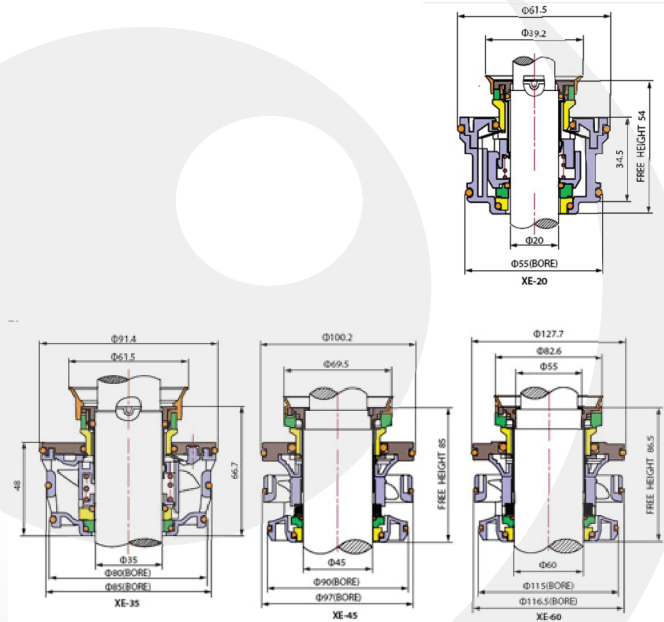
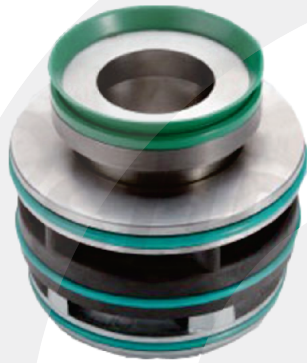


E-XE

Certificada ISO 9001/2008

EGEMAF[®]
COMPONENTES ELETROMECÂNICOS LTDA.

**Limites operacionais:**

Pressão < 1.2MPa
Velocidade < 10m/s
Temperatura: -30°C~+180°C

Operating limits:

Pressure < 1.2MPa
Speed < 10m/s
Temperature: -30°C~+180°C

- Anel Giratório (TC)
- Anel Estacionário (TC)
- Selo Secundário (NBR/VITON/EPDM)
- Mola e Outras Peças (SUS304/SUS316)
- Outras Peças (Plástico)

- Rotary Ring (TC)
- Stationary Ring (TC)
- Secondary Seal (NBR/VITON/EPDM)
- Spring & Other Parts (SUS304/SUS316)
- Other Parts (Plastic)