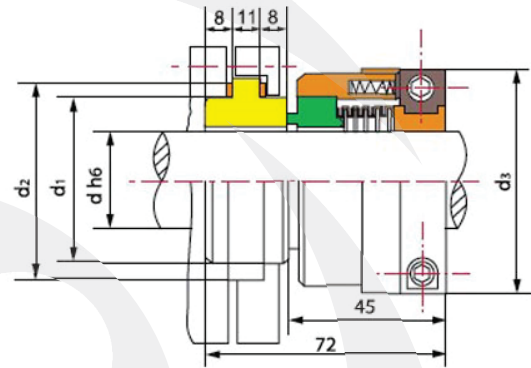
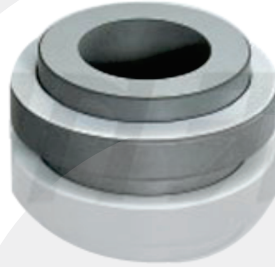
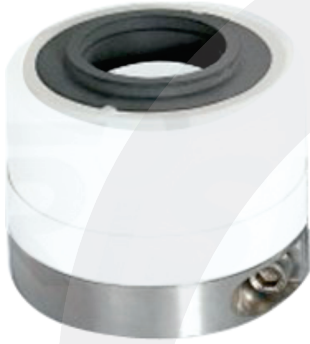


## E-W2

Certificada ISO 9001/2008



## Limites operacionais:

Pressão < 0.5MPa  
 Velocidade < 10m/s  
 Temperatura: -20°C~+125°C

## Operating limits:

Pressure < 0.5MPa  
 Speed < 10m/s  
 Temperature: -20°C~+125°C

- Anel Giratório (Filled PTFE/SiC)
- Anel Estacionário (99% Cerâmica/SiC)
- Selo Secundário (PTFE)
- Mola & Outras Peças (SUS304/SUS316)

- Rotary Ring (Filled PTFE/SiC)
- Stationary Ring (99% Ceramic/SiC)
- Secondary Seal (PTFE)
- Spring & Other Parts (SUS304/SUS316)

Seal size d(mm)	d <sub>3</sub>	d <sub>1</sub>	d <sub>2</sub>
30	66	54	66
35	71	58	70
40	76	63	76
45	81	68	82
50	86	73	86
55	91	78	90
60	96	83	95
65	111	88	100