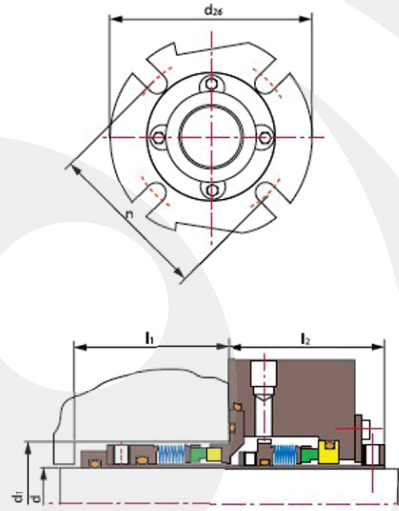
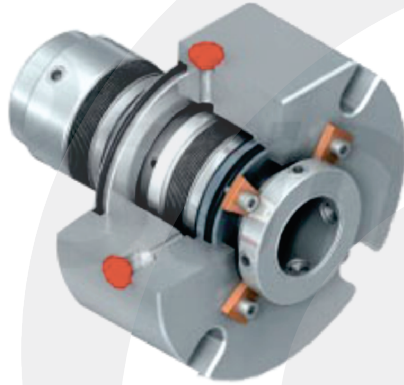


E-C03



Limites operacionais:

Pressão < 2MPa
 Velocidade < 20m/s
 Temperatura: -30°C~+204°C

Operating limits:

Pressure < 2MPa
 Speed < 20m/s
 Temperature: -30°C~+204°C

- Anel Giratório (SiC/Carvão/TC)
- Anel Estacionário (SiC/TC)
- Selo Secundário (VITON/Anel Encapsulado/PTFE)
- Fole Metálico (SUS316L/AM350/Inconel718/
Titânio/Hastelloy-C/Liga-20)
- Outras Peças (SUS304/SUS316/Titânio/Hastelloy-C)

- Rotary Ring (SiC/Carbon/TC)
- Stationary Ring (SiC/TC)
- Secondary Seal (VITON/Encapsulated Ring/PTFE)
- Metal Bellows (SUS316L/AM350/Inconel718/
Titanium/Hastelloy-C/Alloy-20)
- Other Parts (SUS304/SUS316/Titanium/Hastelloy-C)

| d (inches) | d ₂₆ max | d ₁ | | l ₁ min | l ₂ | n | | |
|---------------|------------------------|----------------|-------|-----------------------|----------------|-------|-------|-------|
| | | min | max | | | 3/8" | 1/2" | 5/8" |
| 1.000 | 4.130 | 1.750 | 1.880 | 2.030 | 2.060 | 2.900 | \ | \ |
| 1.125 | 4.250 | 1.750 | 1.880 | 2.030 | 2.060 | 2.900 | \ | \ |
| 1.250 | 4.250 | 2.000 | 2.130 | 2.060 | 2.130 | 3.020 | \ | \ |
| 1.375 | 4.250 | 2.000 | 2.190 | 2.060 | 2.030 | 3.250 | \ | \ |
| 1.500 | 4.500 | 2.250 | 2.380 | 2.250 | 2.130 | 3.500 | 3.630 | \ |
| 1.625 | 5.000 | 2.380 | 2.500 | 2.210 | 2.130 | 3.560 | 3.690 | \ |
| 1.750 | 5.500 | 2.500 | 2.560 | 2.340 | 2.130 | 3.630 | 3.750 | \ |
| 1.875 | 5.500 | 2.630 | 2.690 | 2.340 | 2.130 | 3.750 | 3.880 | \ |
| 2.000 | 5.500 | 2.750 | 2.940 | 2.340 | 2.130 | 4.010 | 4.130 | \ |
| 2.125 | 6.000 | 3.000 | 3.190 | 2.400 | 2.130 | 4.250 | 4.380 | 4.500 |
| 2.250 | 6.250 | 3.130 | 3.190 | 2.400 | 2.130 | 4.250 | 4.380 | 4.500 |
| 2.375 | 6.250 | 3.250 | 3.440 | 2.310 | 2.250 | 4.380 | 4.500 | 4.630 |
| 2.500 | 6.500 | 3.380 | 3.440 | 2.410 | 2.190 | 4.560 | 4.810 | 4.810 |