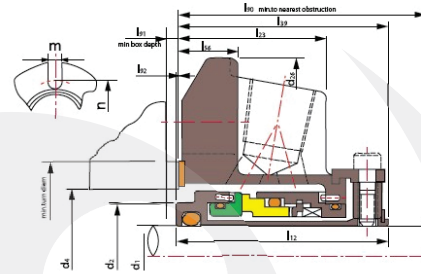
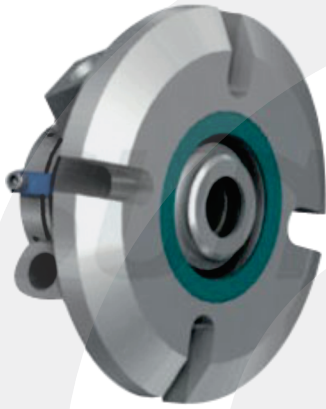


E-CJ01



Limites operacionais:

Pressão < 2.1MPa (shaft diameter < 75mm)
 < 1.3MPa (shaft diameter > 75mm)
 Velocidade < 25m/s
 Temperatura: -30°C ~ +205°C

- Anel Giratório (SiC/TC)
- Anel Estacionário (SiC/Carvão)
- Selo Secundário (VITON/Anel Encapsulado/PTFE)
- Outras Peças (SUS304/SUS316/Titânio/Hastelloy-C)

Operating limits:

Pressure < 2.1MPa (shaft diameter < 75mm)
 < 1.3MPa (shaft diameter > 75mm)
 Speed < 25m/s
 Temperature: -30°C ~ +205°C

- Rotary Ring (SiC/TC)
- Stationary Ring (SiC/Carbon)
- Secondary Seal (VITON/ Encapsulated Ring/PTFE)
- Other Parts (SUS304/SUS316/Titanium/Hastelloy-C)

EGEMAF
 COMPONENTES ELETROMECÂNICOS LTDA.
 Certificada ISO 9001/2008

d ₁ (mm)	d ₂	d ₄		d ₂₆	l ₁₂	l ₂₃	l ₃₉	l ₅₆	l ₉₀	l ₉₁	l ₉₂	m	n
		min	max										
25	34.9	36.7	48.0	101.6	50.5	34.4	49.6	13.5	50.8	4.0	0.9	13.3	71.2
28	38.1	\	51.2	104.8	52.4	36.7	52.4	13.5	54.0	3.2	\	13.3	74.5
30	40.0	\	56.5	108.0	52.4	36.7	52.4	13.5	54.0	3.2	\	13.3	79.9
32	41.3	\	58.3	108.0	52.4	36.7	52.4	13.5	54.0	3.2	\	13.3	81.6
33	44.5	\	61.5	111.1	52.4	36.7	52.4	13.5	54.0	3.2	\	13.3	84.8
35	44.5	\	61.5	111.1	52.4	36.7	52.4	13.5	54.0	3.2	\	13.3	84.8
38	49.2	51.0	68.1	123.8	54.8	37.8	54.0	15.1	55.5	4.0	0.8	13.3	91.4
40	52.4	54.2	71.4	127.0	54.8	37.8	54.0	15.1	55.5	4.0	0.8	14.3	95.7
43	55.1	56.9	74.1	133.4	54.8	37.8	54.0	15.1	55.5	4.0	0.8	14.3	98.4
45	55.1	56.9	74.1	133.4	54.8	37.8	54.0	15.1	55.5	4.0	0.8	14.3	98.4
48	58.7	60.5	74.1	133.4	54.8	37.8	54.0	15.1	55.5	4.0	0.8	14.3	98.4
50	61.9	63.7	76.6	139.7	60.3	40.7	58.7	27.0	60.3	4.7	1.6	14.3	101.6
53	65.1	66.9	85.3	148.8	60.3	40.7	58.7	15.1	60.3	4.7	1.6	17.4	113.5
55	66.7	75.0	85.3	148.8	60.3	40.7	58.7	15.1	60.3	4.7	1.6	17.4	113.5
58	68.2	70.0	88.5	165.1	60.3	40.7	58.7	15.1	60.3	4.7	1.6	17.4	116.0
60	71.4	73.2	91.7	165.1	63.1	43.6	62.6	15.9	64.2	3.6	1.6	17.4	119.9
63	77.8	\	98.8	171.5	63.1	43.6	65.1	15.9	66.7	3.2	0.5	17.4	127.0
65	77.8	\	98.8	171.5	63.1	43.6	65.1	15.9	66.7	3.2	\	17.4	127.0
68	84.1	\	103.2	171.5	63.5	41.3	63.5	15.9	65.1	3.2	\	17.4	131.3
70	84.1	\	103.2	171.5	63.5	41.3	63.5	15.9	65.1	3.2	\	17.4	131.3
75	92.1	\	113.5	196.9	63.5	45.4	65.1	17.4	66.7	3.2	1.36	20.6	145.3
80	95.3	97.9	116.8	196.9	65.1	40.5	63.8	\	66.9	4.5	\	20.6	148.4
85	101.6	104.8	123.2	206.4	65.1	40.5	65.1	\	68.3	3.2	\	20.1	154.8
90	107.1	110.3	129.5	212.7	65.1	40.5	65.1	\	68.3	3.2	\	17.4	158.8
95	110.3	113.5	132.1	222.3	65.1	40.5	65.1	\	68.3	3.2	\	17.4	172.0
100	116.7	119.8	139.7	228.6	65.1	40.5	65.1	\	68.3	3.2	\	20.6	171.7
105	119.8	123.0	142.9	228.6	65.1	40.5	65.1	\	68.3	3.2	\	20.6	174.9
110	129.4	132.5	152.4	241.3	65.1	40.5	65.1	\	68.3	3.2	\	20.6	184.4
115	129.4	132.5	152.4	241.3	65.1	40.5	65.1	\	68.3	3.2	\	20.6	184.4
120	135.7	138.9	160.4	263.5	65.1	40.5	65.1	\	68.3	3.2	\	20.6	192.4
125	148.4	151.6	184.4	304.8	75.0	44.4	77.3	\	80.5	3.2	\	20.6	254.0
130	154.8	157.9	190.8	311.2	75.0	44.4	77.3	\	80.5	3.2	\	20.6	260.4
135	161.1	164.3	203.2	322.3	75.0	44.4	77.3	\	80.5	3.2	\	23.8	266.7
140	161.1	164.3	203.2	322.3	75.0	44.4	77.3	\	80.5	3.2	\	23.8	266.7

d ₁ (inches)	d ₂	d ₄		d ₂₆	l ₁₂	l ₂₃	l ₃₉	l ₅₆	l ₉₀	l ₉₁	l ₉₂	m	n
		min	max										
1.000	1.375	1.445	1.889	4.000	1.989	1.353	1.954	0.531	2.000	0.160	0.035	0.525	2.805
1.125	1.500	*	2.015	4.125	2.062	1.446	2.062	0.531	2.125	0.125	*	0.525	2.933
1.250	1.625	*	2.294	4.250	2.062	1.446	2.062	0.531	2.125	0.125	*	0.525	3.213
1.375	1.750	*	2.421	4.375	2.062	1.446	2.062	0.531	2.125	0.125	*	0.525	3.338
1.500	1.937	2.007	2.680	4.875	2.156	1.487	2.125	0.593	2.187	0.156	0.031	0.525	3.599
1.625	2.062	2.132	2.812	5.000	2.156	1.487	2.125	0.593	2.187	0.156	0.031	0.562	3.766
1.750	2.170	2.240	2.918	5.250	2.156	1.487	2.125	0.593	2.187	0.156	0.031	0.562	3.875
1.875	2.312	2.382	2.918	5.250	2.156	1.487	2.125	0.593	2.187	0.156	0.031	0.562	3.875
2.000	2.437	2.507	3.015	5.500	2.375	1.601	2.312	1.063	2.375	0.187	0.062	0.562	4.000
2.125	2.562	2.632	3.360	5.859	2.375	1.601	2.312	0.593	2.375	0.187	0.062	0.687	4.469
2.250	2.687	2.757	3.485	6.500	2.375	1.601	2.312	0.593	2.375	0.187	0.062	0.687	4.566
2.375	2.812	2.882	3.610	6.500	2.484	1.717	2.466	0.625	2.528	0.143	0.018	0.687	4.719
2.500	3.062	*	3.891	6.750	2.484	1.717	2.562	0.625	2.625	0.125	*	0.687	5.000
2.625	3.312	*	4.062	6.750	2.500	1.625	2.500	0.625	2.562	0.125	*	0.687	5.170
2.750	3.312	*	4.062	6.750	2.500	1.625	2.500	0.625	2.562	0.125	*	0.687	5.170
2.875	3.375	*	4.186	7.000	2.500	1.725	2.500	0.625	2.562	0.125	*	0.687	5.312
3.000	3.625	*	4.469	7.750	2.500	1.787	2.562	0.685	2.625	0.125	*	0.812	5.720
3.125	3.750	3.853	4.600	7.875	2.562	1.593	2.562	**	2.687	0.125	*	0.812	5.845
3.250	3.750	3.853	4.600	7.437	2.562	1.593	2.510	**	2.635	0.177	0.052	0.812	5.845
3.375	4.000	4.125	4.850	8.125	2.562	1.593	2.562	**	2.687	0.125	*	0.812	6.095
3.500	4.125	4.250	4.975	8.250	2.562	1.593	2.562	**	2.687	0.125	*	0.812	6.220
3.625	4.218	4.343	5.100	8.375	2.562	1.593	2.562	**	2.687	0.125	*	0.687	6.250