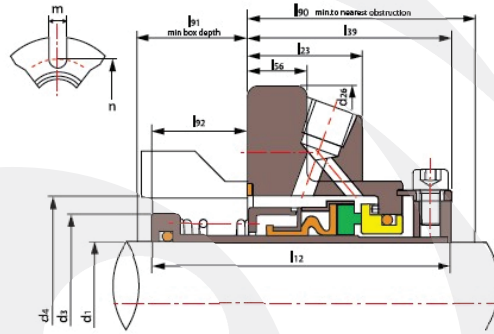
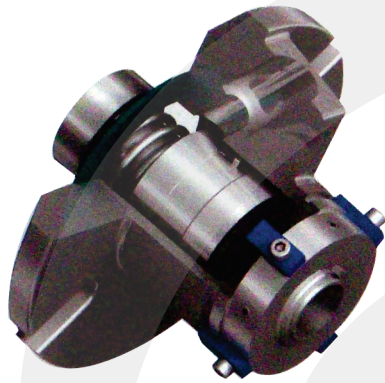


E-CJ03



Limites operacionais:

Pressão < 2.8MPa
 Velocidade < 25m/s
 Temperatura: -30°C~+205°C

Operating limits:

Pressure < 2.8MPa
 Speed < 25m/s
 Temperature: -30°C~+205°C

- Anel Giratório (SiC/Carvão/TC)
- Anel Estacionário (SiC/TC)
- Selo Secundário (VITON/Anel Encapsulado/PTFE)
- Outras Peças (SUS304/SUS316/Titânio/Hastelloy-C)

- Rotary Ring (SiC/Carbon/TC)
- Stationary Ring (SiC/TC)
- Secondary Seal (VITON/ Encapsulated Ring/PTFE)
- Other Parts(SUS304/SUS316/Titanium/Hastelloy-C)

d ₁ (inches)	d ₃	d ₄		d ₂₆	l ₁₂	l ₁₃	l ₂₃	l ₃₉	l ₉₀	l ₉₁	l ₉₂	m	n
		min	max										
25	34.9	38.1	48.0	101.6	69.6	34.4	49.6	13.5	50.8	23.1	20.0	13.3	71.2
28	38.1	41.3	51.2	104.8	65.9	36.7	52.4	13.5	54.0	16.7	13.5	13.3	74.5
30	42.8	46.0	56.5	108.0	69.0	36.7	52.4	13.5	54.0	19.8	16.7	13.3	81.6
32	42.8	46.0	58.3	108.0	69.0	36.7	52.4	13.5	54.0	19.8	16.7	13.3	81.6
33	46.0	49.2	61.5	111.1	66.7	36.7	52.4	13.5	54.0	17.5	14.3	13.3	84.8
35	46.0	49.2	61.5	111.1	66.7	36.7	52.4	13.5	54.0	17.5	14.3	13.3	84.8
38	50.8	54.0	68.1	123.8	75.2	37.8	54.0	15.1	55.6	24.4	21.2	13.3	91.4
40	54.0	57.2	71.4	127.0	76.8	37.8	54.0	15.1	55.6	26.0	22.8	14.3	95.7
43	57.2	60.3	74.1	133.4	77.2	37.8	54.0	15.1	55.6	26.4	23.2	14.3	98.4
45	57.2	60.3	74.1	133.4	77.2	37.8	54.0	15.1	55.6	26.4	23.2	14.3	98.4
48	60.3	63.5	74.1	133.4	77.2	37.8	54.0	15.1	55.6	26.4	23.2	14.3	98.4
50	68.2	69.9	76.6	139.7	87.7	40.7	58.7	27.0	60.3	32.2	29.0	14.3	101.6
53	71.4	73.0	85.3	148.8	87.7	40.7	58.7	15.1	60.3	32.2	29.0	17.4	113.5
55	69.9	7B.0	85.3	148.8	90.9	40.7	58.7	15.1	60.3	35.4	32.2	17.4	113.5
58	69.9	75.0	88.5	165.1	90.9	40.7	58.7	15.1	60.3	35.4	32.2	17.4	116.0
60	77.8	79.4	91.7	165.1	88.1	43.6	62.6	15.9	64.2	28.6	25.5	17.4	119.9
63	82.6	85.7	98.8	171.5	97.3	43.6	65.1	15.9	66.7	35.4	32.2	17.4	127.0
65	82.6	85.7	98.8	171.5	97.3	43.6	65.1	15.9	66.7	35.4	32.2	17.4	127.0
68	88.9	92.1	103.2	171.5	101.0	41.2	63.5	15.9	65.1	40.7	37.5	17.4	131.3
70	88.9	92.1	103.2	171.5	101.0	41.2	63.5	17.4	65.1	40.7	37.5	17.4	131.3
75	100.0	101.6	113.5	196.9	106.0	45.4	65.1	\	66.7	44.1	40.9	20.6	145.3
80	103.2	104.8	116.8	188.9	106.4	40.5	63.8	\	66.9	45.8	42.6	20.6	148.5
85	109.5	111.1	123.2	206.4	111.1	40.5	65.1	\	68.3	49.2	46.1	20.6	154.8
90	115.9	117.5	129.5	212.7	117.5	40.5	65.1	\	68.3	55.6	52.4	17.4	158.8
95	117.7	120.0	132.1	222.3	112.7	40.5	65.1	\	68.3	50.8	47.6	17.4	172.0
100	125.4	127.8	139.7	228.6	122.2	40.5	65.1	\	68.3	60.3	57.2	20.6	171.7
125	165.1	167.5	184.4	304.8	146.0	41.4	77.3	\	80.5	71.9	68.8	20.6	254.0