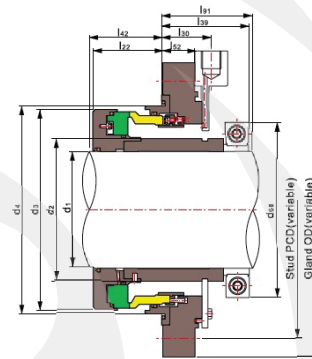
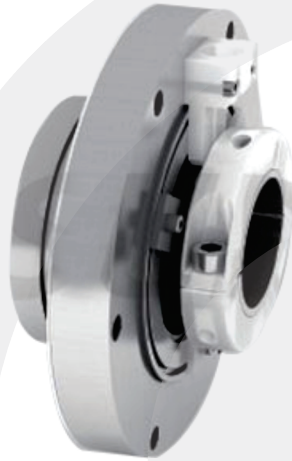


E-CJ09

Certificada ISO 9001/2008

EGEMAF[®]
COMPONENTES ELETROMECÂNICOS LTDA.



Limites operacionais:

Pressão < 3MPa
Velocidade < 20m/s
Temperatura: -80°C~+200°C (Water quench)

Operating limits:

Pressure < 3MPa
Speed < 20m/s
Temperature: -80°C~ +200°C (Water quench)

- Anel Giratório (SiC/Carvão/TC)
- Anel Estacionário (SiC)
- Selo Secundário (VITON/AFLAS/Kalrez)
- Outras Peças (C-276/Duplex/316)

- Rotary Ring (SiC/Carbon/TC)
- Stationary Ring (SiC)
- Secondary Seal (VITON/ AFLAS/ Kalrez)
- Other Parts(C-276/Duplex/316)

d ₁ (mm)	d ₂	d ₃	d ₄	d ₆₈	l ₂₂	l ₃₀	l ₃₉	l ₄₂	l ₅₂	l ₉₁
30	35	67	73	73	32.5	34	54.5	35.5	20	57.5
41.3	47	85	91	89	32.5	37	60.5	35.5	23	63.5
48	54	90	96	93	34.5	40	63.5	37.5	26	66.5
55	62	100	106	104	34.5	40	63.5	37.5	26	66.5
70	78	119	125	121	40.5	40	63.5	43.5	26	66.5
76.2	85	130	136	135	47.5	41	66.5	50.5	27	69.5
86	96	138.5	144.5	141	45.5	41	66.5	48.5	27	69.5
92	102	148	154	147	45.5	41	66.5	48.5	27	69.5
112	122	172	178	186	59	42.5	75	62	28.5	78
124	134	187	193	195	59	42.5	75	62	28.5	78
140	152	205	211	215	59	42.5	75	62	28.5	78
158	170	225	231	235	60.5	46	78.5	63.5	32	81.5
165.1	178	240	246	245	60	46.5	79	63	32.5	82
194	208	266	272	280	60	46.5	79	63	32.5	82
200	215	275	281	285	67.4	49.5	82	70.4	35.5	85
220	234	288	294	295	69.3	49.5	82	72.3	35.5	85