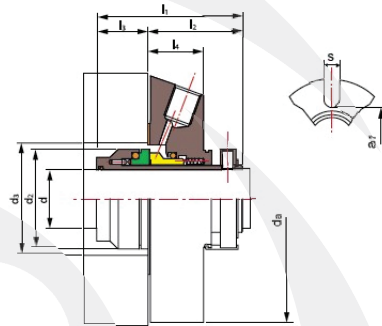
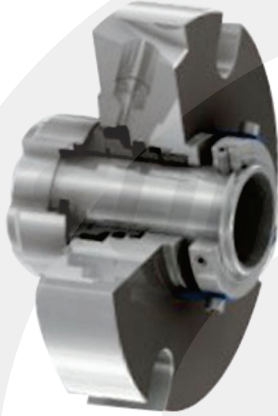


E-CB03

EGEMAF
 COMPONENTES ELETROMECÂNICOS LTDA.
 Certificada ISO 9001/2008



Limites operacionais:

Pressão < 2.5MPa
 Velocidade < 16m/s
 Temperatura: -40°C~+220°C

Operating limits:

Pressure < 2.5MPa
 Speed < 16m/s
 Temperature: -40°C~+220°C

- Anel Giratório (SiC/TC)
- Anel Estacionário (SiC/TC/Carvão)
- Selo Secundário (VITON/Anel Encapsulado/PTFE/NBR/EPDM)
- Outras Peças (SUS304/SUS316/Titânio/Hastelloy-C)

- Rotary Ring (SiC/TC)
- Stationary Ring (SiC/TC/Carbon)
- Secondary Seal (VITON/ Encapsulated Ring/PTFE/NBR/EPDM)
- Other Parts(SUS304/SUS316/Titanium/Hastelloy-C)

d (inches)	d ₂	d ₃		l ₁	l ₂	l ₃	l ₄	d _a	a ₁	S
		min	max							
1.000	1.693	1.750	2.000	2.640	1.669	0.969	1.000	4.134	2.440	0.520
1.125	1.811	1.875	2.050	2.640	1.669	0.969	1.000	4.134	2.440	0.520
1.250	1.960	2.000	2.250	2.640	1.669	0.969	1.000	4.330	2.640	0.520
1.375	2.086	2.125	2.420	2.640	1.669	0.969	1.000	4.449	2.750	0.520
1.500	2.200	2.250	2.625	2.640	1.669	0.969	1.000	4.842	2.950	0.520
1.625	2.340	2.375	2.700	2.640	1.669	0.969	1.000	4.842	3.030	0.599
1.750	2.460	2.500	2.812	2.640	1.669	0.969	1.000	5.433	3.190	0.599
1.875	2.582	2.625	2.940	2.640	1.669	0.969	1.000	5.433	3.190	0.599
2.000	2.677	2.750	3.190	2.640	1.669	0.969	1.000	5.827	3.430	0.599
2.125	2.834	2.875	3.437	2.640	1.669	0.969	1.000	5.827	3.820	0.709
2.250	2.960	3.000	3.560	2.640	1.669	0.969	1.000	6.181	3.940	0.709
2.375	3.070	3.125	3.590	2.640	1.669	0.969	1.000	6.181	4.020	0.709
2.500	3.212	3.250	3.800	2.640	1.669	0.969	1.000	6.417	4.170	0.709
2.625	3.338	3.375	3.937	2.640	1.669	0.969	1.000	6.417	4.290	0.709
2.750	3.660	3.750	4.250	2.640	1.669	0.969	1.000	7.008	4.650	0.709
2.875	3.811	3.875	4.567	3.307	2.260	1.047	1.000	7.480	5.079	0.709
3.000	3.937	4.000	4.646	3.307	2.260	1.047	1.102	7.480	5.079	0.709
3.125	4.063	4.125	4.764	3.307	2.260	1.047	1.102	7.677	5.315	0.709
3.250	4.189	4.250	4.882	3.307	2.260	1.047	1.102	7.677	5.315	0.709
3.375	4.311	4.374	5.039	3.307	2.260	1.047	1.102	7.795	5.472	0.866
3.500	4.437	4.500	5.157	3.307	2.260	1.047	1.102	7.795	5.591	0.866
3.625	4.563	4.625	5.315	3.307	2.260	1.047	1.102	8.071	5.709	0.866
3.750	4.689	4.750	4.433	3.307	2.260	1.047	1.102	8.189	5.827	0.866
4.000	4.937	5.000	5.669	3.307	2.260	1.047	1.102	8.583	6.063	0.866

d (mm)	d ₂	d ₃		l ₁	l ₂	l ₃	l ₄	d _a	a ₁	S
		min	max							
25	43.0	44.0	51.5	67	42.4	24.6	25.4	105	62	13.2
28	46.0	47.0	52.0	67	42.4	24.6	25.4	105	62	13.2
30	48.0	49.0	56.0	67	42.4	24.6	25.4	105	65	13.2
32	49.8	51.0	57.0	67	42.4	24.6	25.4	110	67	13.2
33	49.8	51.0	57.0	67	42.4	24.6	25.4	110	67	13.2
35	53.0	54.0	61.5	67	42.4	24.6	25.4	113	70	13.2
38	56.0	57.0	66.0	67	42.4	24.6	25.4	123	75	13.2
40	58.0	59.0	68.0	67	42.4	24.6	25.4	123	75	14.2
42	60.5	61.5	69.0	67	42.4	24.6	25.4	133	80	14.2
43	60.5	61.5	70.5	67	42.4	24.6	25.4	133	80	14.2
45	62.5	64.0	73.0	67	42.4	24.6	25.4	138	81	14.2
48	65.6	67.0	75.0	67	42.4	24.6	25.4	138	84	14.2
50	68.0	69.0	78.0	67	42.4	24.6	25.4	148	87	14.2
53	72.0	73.0	87.0	67	42.4	24.6	25.4	148	97	18
55	73.0	74.0	83.0	67	42.4	24.6	25.4	148	90	18
60	78.0	79.0	91.0	67	42.4	24.6	25.4	157	102	18
65	84.8	85.7	98.5	67	42.4	24.6	25.4	163	109	18
70	93.0	95.0	108.0	67	42.4	24.6	25.4	178	118	18
75	100.0	101.6	118.0	84	57.4	26.6	28.0	190	129	18
80	106.4	108.0	124.0	84	57.4	26.6	28.0	195	135	18
85	109.5	111.1	128.0	84	57.4	26.6	28.0	198	139	22
90	115.9	117.5	135.0	84	57.4	26.6	28.0	205	145	22
95	119.1	120.7	138.0	84	57.4	26.6	28.0	208	148	22
100	125.4	127.0	144.0	84	57.4	26.6	28.0	218	154	22